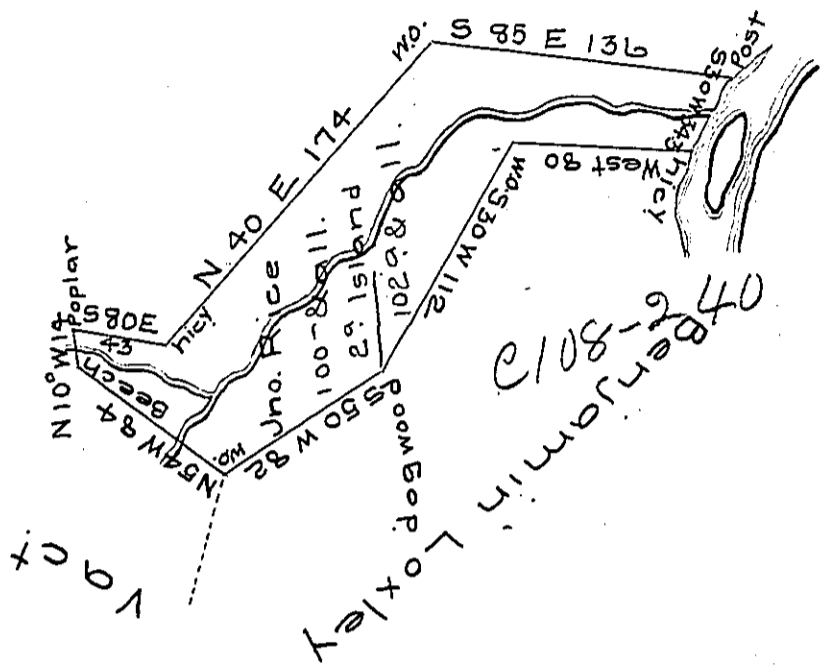


Note, the Island to be included in the Patent

V - a - c - a - n - t



Situated, on Braddocks road on the West side of the Great Crossings of Youghiogeni river formerly in Cumberland County the new purchase now in Wharton township Fayette County & surveyed the 6th day of December 1769. In pursuance of an order of survey N^o 3570 dated June 27th 1769.

per.

Alexander M^o Clean Dep^t

To John Lukens Esquire
Surveyor General

IN TESTIMONY that the above is a copy of the original remaining on file in the Department of Internal Affairs of Pennsylvania, made conformably to an Act of Assembly approved the 16th day of February, 1833, I have hereunto set my Hand and caused the Seal of said Department to be affixed at Harrisburg, this fourteenth day of June 1906.

George D. ...
Secretary of Internal Affairs